

Local expertise with powerful national marketing

EDWARDS
ESTATE AGENTS

RIDLEY ROAD
BOURNEMOUTH, BH9 1LB



OFFERS IN EXCESS OF £400,000

Located in the beautiful town of BOURNEMOUTH, this wonderful DETACHED HOUSE boasts four bedrooms, two reception rooms, and a spacious kitchen/diner offering ample space for comfortable living.

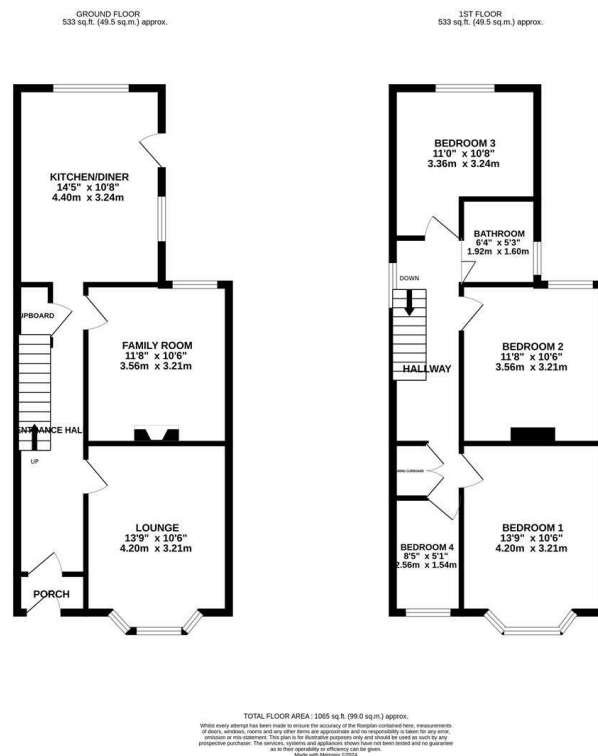
The character of this house shines through, making it a unique find. The generously sized rear garden is a standout feature, stretching over approximately 100ft and featuring a delightful decking area perfect for outdoor gatherings. Additionally, a workshop and storage shed provide practical spaces for hobbies or storage needs.

Convenience is key with parking available for one vehicle on the driveway, ensuring you never have to worry about finding a spot after a long day. Whether you're looking to relax in the garden or entertain in the reception rooms, this property has it all.

Energy Performance Rating D
Council Tax Band C



Local expertise with powerful national marketing



Ferndown Office

404 Ringwood Road, Ferndown, Dorset, BH22 9AU • www.edwardestates.com
01202 855595

EDWARDS
ESTATE AGENTS

These particulars are believed to be correct but their accuracy is not guaranteed and they do not form part of any contract. Whilst every effort is made to ensure the accuracy of these details, it should be noted that the above measurements are approximate only. Floorplans are for representation purposes only and prepared according to the RICS Code of Measuring Practice by our floorplan provider. Therefore, the layout of doors, windows and rooms are approximate and should be regarded as such by any prospective purchaser. Any internal photographs are intended as a guide only and it should not be assumed that any of the furniture/ fittings are included in any sale. Where shown, details of lease, ground rent and service charge are provided by the vendor and their accuracy cannot be guaranteed, as the information may not have been verified and further checks should be made either through your solicitor/conveyancer or by referring to the home information pack for this property. Where appliances, including central heating, are mentioned, it cannot be assumed that they are in working order, as they have not been tested. Please also note that wiring, plumbing and drains have not been checked.