

Local expertise with powerful national marketing

EDWARDS
ESTATE AGENTS

EMLEY LANE
WIMBORNE BH21 7HE



£2,700 PER MONTH

- Four Bedrooms
- Detached Home
- Recently Refurbished
- New Kitchen
- Village Location
- Beautiful Landscaped Gardens
- Available now
- EPC D
- Gardener included

A stunning, farm house set in the beautiful village of Hinton Martell, with idyllic views across the rear of the property. Entering the property via a private road to the house which can accommodate a large number of vehicles. The ground floor comprises a lovely brand new modern fitted kitchen with cooker and hob, (please note there are no other white goods included), this leads into a good size utility room, with continuation of the same fitted units.

The sitting room is spacious and bright and includes the original brickwork fireplace, with patio doors leading onto a terrace and a gorgeous mature garden.

There is also a separate second reception room for either a dining area, office or 5th bedroom. A cloakroom with WC, sink and shower have also been newly fitted. Huge understairs storage. Upstairs comprises of four double bedrooms and a family bathroom to include both a bath and shower.

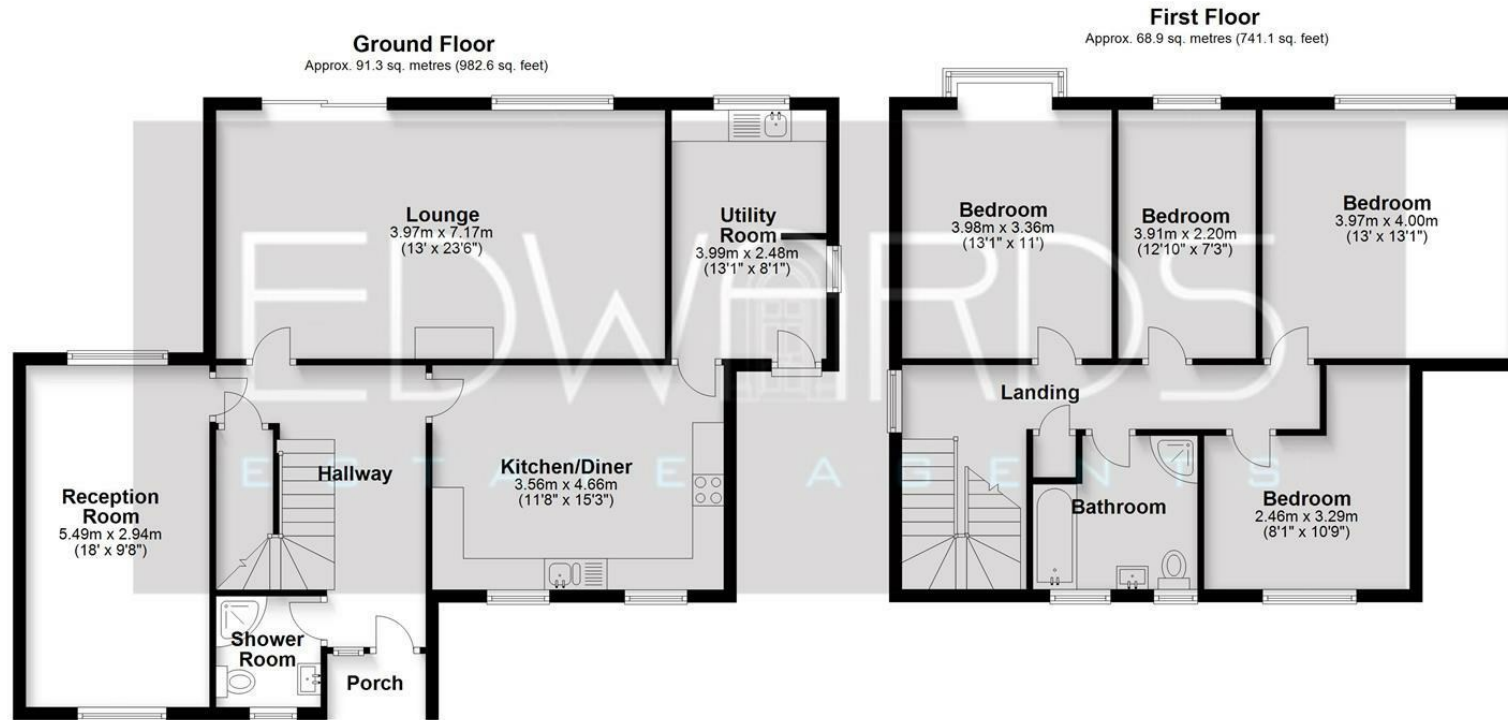
This is a beautiful property featuring everything needed to make it a home. Please call us for more information. Available on an unfurnished basis and long term let. Includes a gardener every month.











Total area: approx. 160.1 sq. metres (1723.7 sq. feet)

Bournemouth Energy Floor Plans are provided for illustration/identification purposes only. Not drawn to scale, unless stated and accept no responsibility for any error, omission or mis-statement. Dimensions shown are to the nearest 7.5 cm / 3 inches. Total approx area shown on the plan may include any external terraces, balconies and other external areas. To find out more about Bournemouth Energy please visit www.bournemouthenergy.co.uk (Tel: 01202 558006)

Plan produced using PlanUp.

These particulars are believed to be correct but their accuracy is not guaranteed and they do not form part of any contract. Whilst every effort is made to ensure the accuracy of these details, it should be noted that the above measurements are approximate only. Floorplans are for representation purposes only and prepared according to the RICS Code of Measuring Practice by our floorplan provider. Therefore, the layout of doors, windows and rooms are approximate and should be regarded as such by any prospective purchaser. Any internal photographs are intended as a guide only and it should not be assumed that any of the furniture/ fittings are included in any sale. Where shown, details of lease, ground rent and service charge are provided by the vendor and their accuracy cannot be guaranteed, as the information may not have been verified and further checks should be made either through your solicitor/conveyancer or by referring to the home information pack for this property. Where appliances, including central heating, are mentioned, it cannot be assumed that they are in working order, as they have not been tested. Please also note that wiring, plumbing and drains have not been checked.

Local expertise with powerful national marketing

EDWARDS
ESTATE AGENTS

Ferndown, Dorset BH22 9AU

01202 039918

www.edwardstates.co.uk