

*Local expertise with powerful national marketing*

EDWARDS  
ESTATE AGENTS

COUNTESS CLOSE

WIMBORNE, BH21 1UJ



# GUIDE PRICE £540,000

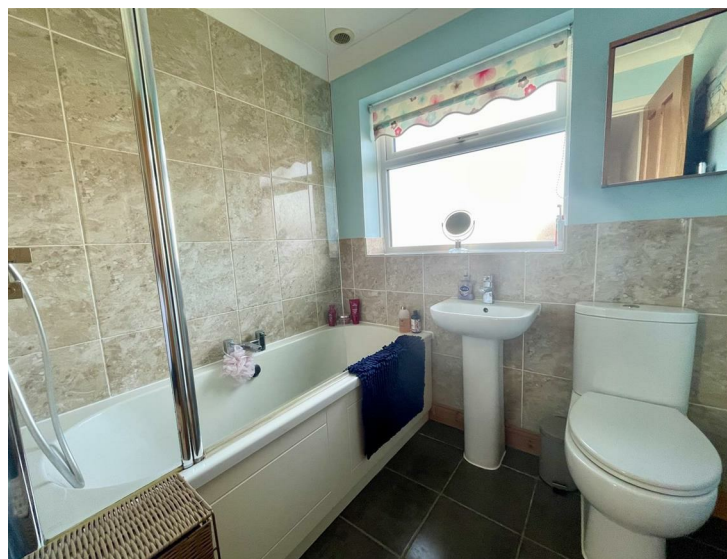
This well-maintained family home is located in a QUIET CUL DE SAC within popular Merley and has excellent curb appeal having been MODERNISED with new glazing, the addition of cladding and landscaping to both front and rear gardens. The frontage offers PLENTY OF PARKING on the block paved driveway and the newly installed front door is covered by a porch. The frontage has been landscaped with artificial grass.

Once inside this beautifully presented home, there is a spacious entrance hall with a coat cupboard, downstairs cloakroom and further storage under the stairs. The double garage can also be accessed, with scope for conversion (STP) and the benefit of further access to the rear garden. The property is perfect for a family with a lovely large open plan lounge/dining room which is warm and light with a dual aspect, to include bifold doors to the rear garden and access to the kitchen from both the living room and hall. The kitchen itself includes plenty of cupboard space and a breakfast bar, with a delightful outlook to the landscaped rear garden. There is a further generously sized utility room, with access to the garden.

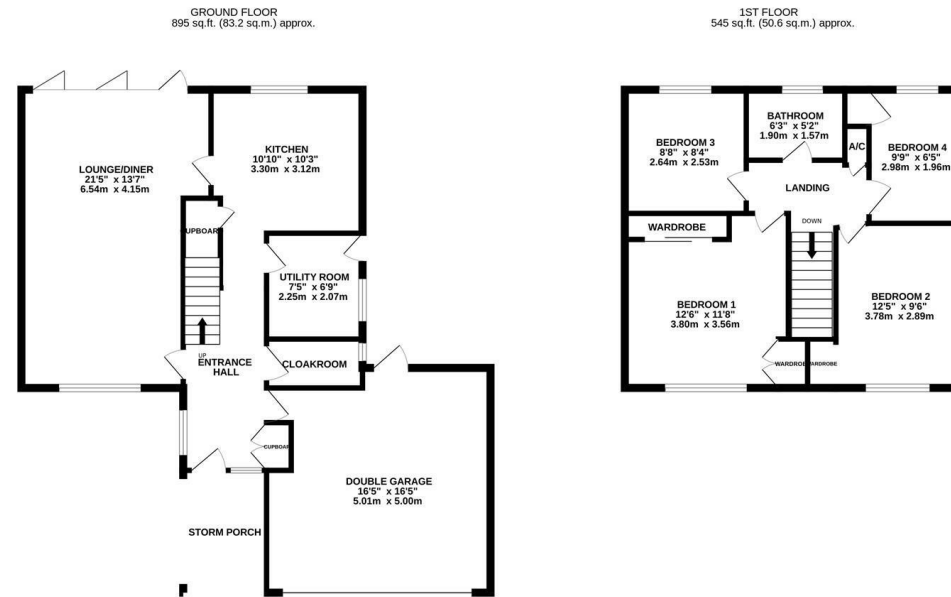
Upstairs, the property includes four bedrooms, two of which are double rooms with built in storage and an outlook to the front of the property. The two single bedrooms are reasonably sized and look over the garden. The modern family bathroom includes a shower over the bath and is fully tiled and there is an airing cupboard on the landing.

The rear garden is spacious and beautifully landscaped to include plenty of space to play, entertain and relax while being low maintenance with an artificial lawn and paving. A wonderful feature is the garden room, which can be fully opened to integrate your entertaining space into the garden.

Energy Performance Rating D  
Council Tax Band E



# Local expertise with powerful national marketing



TOTAL FLOOR AREA : 1440 sq.ft. (133.8 sq.m.) approx.  
Whilst every attempt has been made to ensure the accuracy of the floorplan contained here, measurements of doors, windows, rooms and any other items are approximate and no responsibility is taken for any error, omission or mis-statement. This plan is for illustrative purposes only and should be used as such by any prospective purchaser. The services, systems and appliances shown have not been tested and no guarantee as to their operability or efficiency can be given.  
Made with Metropix ©2024

## Ferndown Office

404 Ringwood Road, Ferndown, Dorset, BH22 9AU • [www.edwardstates.com](http://www.edwardstates.com)  
01202 855595

EDWARDS  
ESTATE AGENTS

These particulars are believed to be correct but their accuracy is not guaranteed and they do not form part of any contract. Whilst every effort is made to ensure the accuracy of these details, it should be noted that the above measurements are approximate only. Floorplans are for representation purposes only and prepared according to the RICS Code of Measuring Practice by our floorplan provider. Therefore, the layout of doors, windows and rooms are approximate and should be regarded as such by any prospective purchaser. Any internal photographs are intended as a guide only and it should not be assumed that any of the furniture/ fittings are included in any sale. Where shown, details of lease, ground rent and service charge are provided by the vendor and their accuracy cannot be guaranteed, as the information may not have been verified and further checks should be made either through your solicitor/conveyancer or by referring to the home information pack for this property. Where appliances, including central heating, are mentioned, it cannot be assumed that they are in working order, as they have not been tested. Please also note that wiring, plumbing and drains have not been checked.